



Mary's

**Annual Report
2022/2023**



As Patron of Mary's, an organisation working with disadvantaged young people in North London, many of them involved in violent gangs, I have come to know Jason and his team as quite exceptional and exceedingly brave. Their direct intervention, dogged determination to stay in touch with people being ignored by much the rest of society, and tireless work with them have, I am absolutely sure, saved many lives.

London, like much of the rest of Britain, is suffering from an epidemic of violent gang-based crime as disenchanted youths battle for territory and drugs business. Many are excluded early from school and find themselves with nowhere to go save the streets. Many are entirely terrified by what that means and understand that the likelihood of being seriously injured is high. A majority are desperate to get out but have no means of doing so.

Mary's works with them, offering safe places, sports and other activities, and patient conversation about their problems. Jason's team is always available to be called and frequently put themselves in harm's way. They are the nearest thing that this part of London has to genuine local heroes.

Andrew Marr, Patron

Welcome to Mary's

This year our young person at risk referrals have increased. Our team has grown. I am proud of the excellent mentors who achieve trusted relationships, listen, teach, give practical and psychological help to over 1000 young people in our broader work and a record 291 in the intensive high risk group that is our area of specialism.

Each young person who finds Mary's at their point of crisis is one less young person at risk of being excluded from school, being groomed into gangs, being sent to prison or possibly beginning an adult life of violence.

We're all lucky to be part of something this valuable.

Mary Jane Roberts



Meet the team



Emile Libock

Senior Caseworker



Janine Goodin-Deer

Head of Therapeutic Services



Kafel Brown

Senior Caseworker



Chris Lenga

Behavioural Lead



Sara Beshira

Caseworker



Abdisamed Abdi

Caseworker



Emmanuel Djobo

Caseworker



Lesley Robb

Administrator



Jason Allen BEM

Director

2

The project was started 17 years ago, with a view that many young people were being excluded from school and society with a knock on effect of exploitation and or becoming involved in the criminal justice system. These young people for various reasons were not accessing or receiving the support they needed.

Many of these young people were suffering with mental health issues and high levels of paranoia, loneliness, violence, fear and oppression. Adapting an attachment theory way of working to support these young people 'slipping through the net' was key. As the years have gone on developing a psychodynamic framework approach to support young people in various settings has been crucial in saving lives.

We push ourselves to be leading in the field to support young people facing adversity through various interventions 24 hour a day.



Paris Capone

Behavioural Lead



Christian Lenga

Sessional Worker



Chris Lees

Treasurer



Casey Oppong

Trustee



**Dr. Armine
Ishkanian**

Trustee



Alex Hutton Mills

Company Secretary



Gothon Akobola

Trustee



**Catherine Pace
O'Shea**

Trustee



Marjorie Brown

Trustee



Nick Walter

Chair

I am delighted to be the new Chair of Trustees for Mary's. As a senior leader of an inner London school, I know the serious harm exclusion and exploitation can wreck on a young person's life.

When someone is in need, Mary's team steps up. You will see in this report how Mary's outputs are stronger than ever.

To our supporters: thank you for your friendship, especially as we raise funds to build our capacity and future working spaces.

Together we make London a safer home for our young people. They are the true heart of Mary's.

The year in numbers



52

gang mediations



8 visits to hospitals



205

young people completing our mental health program



7 county lines interventions



298

High risk individuals in our Core Program



We facilitated

91

knife amnesties



29

Prison visits



29

young people helped into employment



100

prison packs sent



25

young people's qualifications achieved with their youthworker



681

weapons in knife bin

Who we support

Target Population

Most of our work is with young people aged 14-25 year olds at risk of:

- Involvement in the criminal justice system
- Involvement in violence
- Exclusion from school
- Exploitation

Service Population

We undertake activities with young people such as detached outreach, sport and groups in order to find young people who need our service.

Keeping Young People Safe

Removing weapons
Mediations between groups
Hospital visits
De-escalation
Prison support

Building Emotional Skills

Attachment
Coping mechanisms
Reduce risk to self & others
Understanding trauma
Increased self esteem
Reduced propensity to violence

Education & Life Skills

School-based support
Behavioural support
Communication
Self-management
Employment support
Learning-ready

Since Mary's inception we have responded to the needs of young people at a point of crisis and our practical outlook and help are the bedrock of why our interventions in young people's safety and education are effective.

Who refers a young person to Mary's?

Young people are referred to us from schools, pupil referral units, safeguarding agencies, and through our work out on the streets.

The Core Program

Mary's Core Program has three parts. The first is called Keeping Young People Safe and intervenes where there is a risk of violence or harm to the young person.

The second part of the program is one to one mentoring or counselling for a young person. We call this part of the program Building Emotional Skills.

The third part of the program is building the skills, knowledge and behaviour for a young person to be able to learn or gain employment. We call this element Education and Life Skills.

A young person leaves the Core Program when sustainable outcomes have been achieved for attendance in education, risk of involvement in criminal activity, and not engaging in violence.



The Centre For Youth Impact assists and accredits youth organisations in the collection of evidence. Mary's has achieved its certification for evidence.

Matthias' Story*

Matthias was in juvenile prison from age 15-19. Mary's met and welcomed him in January 2020 when he lived alone in hostel accommodation. At COVID lockdown the government moved him out of London.

Mary's was Matthias' vital voice of care in a strange and lonely setting. After lockdown Mary's negotiated with probation to allow him to travel to see his mother. Matthias received our care packages each week and consistent therapeutic one to one support.

In late 2020 he applied for an Apprenticeship as an appliance engineer. Mary's helped negotiate the cost of travel and supported his uncertainties about whether he could cope at work. With the help of Mary's Matthias completed the studying component of the apprenticeship in 2021 and has good employer reports.

Matthias has succeeded at maintaining a routine, committing to full time work, and had his first life experience of a college environment. He remains on Mary's program.

*Not his real name

There was chaos and none of the services really did much. They just talked like I was an issue. Mary's was totally different. I could call them. They saved my life, really.





The team are on call 24 hours a day, 7 days a week, 365 days a year when other services are closed for young people in tough situations.

They distribute gifts for the holidays, check in and spend time with young people.



Safety

The latest knife crime statistics in England show the scale of young people carrying knives or being exposed to Serious Youth Violence.

- **19%** of knife or offensive weapon disposals by police were for young people aged 10-17
- **Over 4000** NHS hospital episodes were recorded for knife assault, 17% of which were under the age of 18
- In 2020/21 offenses with knives totalled 314 in Camden, 416 in Brent and 424 in Islington. This is an average of 22 recorded knife crimes per week in these areas.

'Knife crime disproportionately impacts the young and disadvantaged'

-Allen, G. and Harding, M. Knife Crime in England and Wales, House of Commons Library, 2021.

Mary's addresses the risks of Serious Youth Violence, it:

- Develops positive relationships with those at risk through counselling or mentoring
- Operates knife amnesties for young people
- Is a 24/7 contact to an emergency on call
- Intervenes in gang disputes
- Reduces retaliations through violence mediation response, including hospital visits for those stabbed and bereavement and counselling for individuals and groups affected by a stabbing.

Mary's safety record in 2021/22:

- 681 Knives in Mary's Knife Bin*
- 5 Firearm Implications*
- 91 Knife Amnesties
- 52 Gang Mediations

*Data: Word4Weapons collections results report October 2021; all other data from internal data collection.

Mary's works closely with partners, for instance London's Violence Reduction Unit and Camden's Gangs Team on young people at high risk of engaging in the criminal justice system.



Violent mediation response - example

10:00pm

Report from a young person of local knife-point robbery

10:10pm

Youthworker triage: who is involved, key contacts and strategy. 24hrs/day

1

2

6:00pm

Mary's organises gang mediation

8:30pm

Mary's achieves weapons amnesty

6

7

1 week intensive

Ongoing group support to react, reduce and avoid any violence triggers

8

9

10:30pm - 11:30pm

>20 young people called, messaged or visited to listen and influence, and be talked down from immediate action

11:30 - 3:00am

De-escalation due to trust in Mary's

3

4

4:00pm - 9:00pm

Safety detached outreach team placed in key areas

5

A year - dependent on need

A year on - dependent on need

Mentoring of new individuals not formerly known but at risk.

Reduced street violence, engagement with education or employment



My youthworker has saved my life, literally dragged me out of a fight and took a knife out of my hands. They gave me another life choice.



Education

Mary's team works within schools, inclusion units and Pupil Referral Units.

Mary's provides social and emotional support so underlying causes of behaviour are addressed. We provide 1:1 mentoring in schools, a presence in classrooms and wrap-around support for the young person outside of school hours.

Our Young Londoner's Fund cohort provides outcome data on our 12 week individual support for secondary school age young people. We found that Mary's reduced the level of aggression and improved mental health and self esteem.

Mary's meant that young people were not excluded, **with 74% of our young people staying in education**, breaking the cycle of at risk young people being taken into gangs.

Children who are outside of mainstream education are more vulnerable to becoming the victim of childhood criminal exploitation

Just for Kids Law Report Excluded, Exploited, Forgotten. 2020.

Stayed in Education

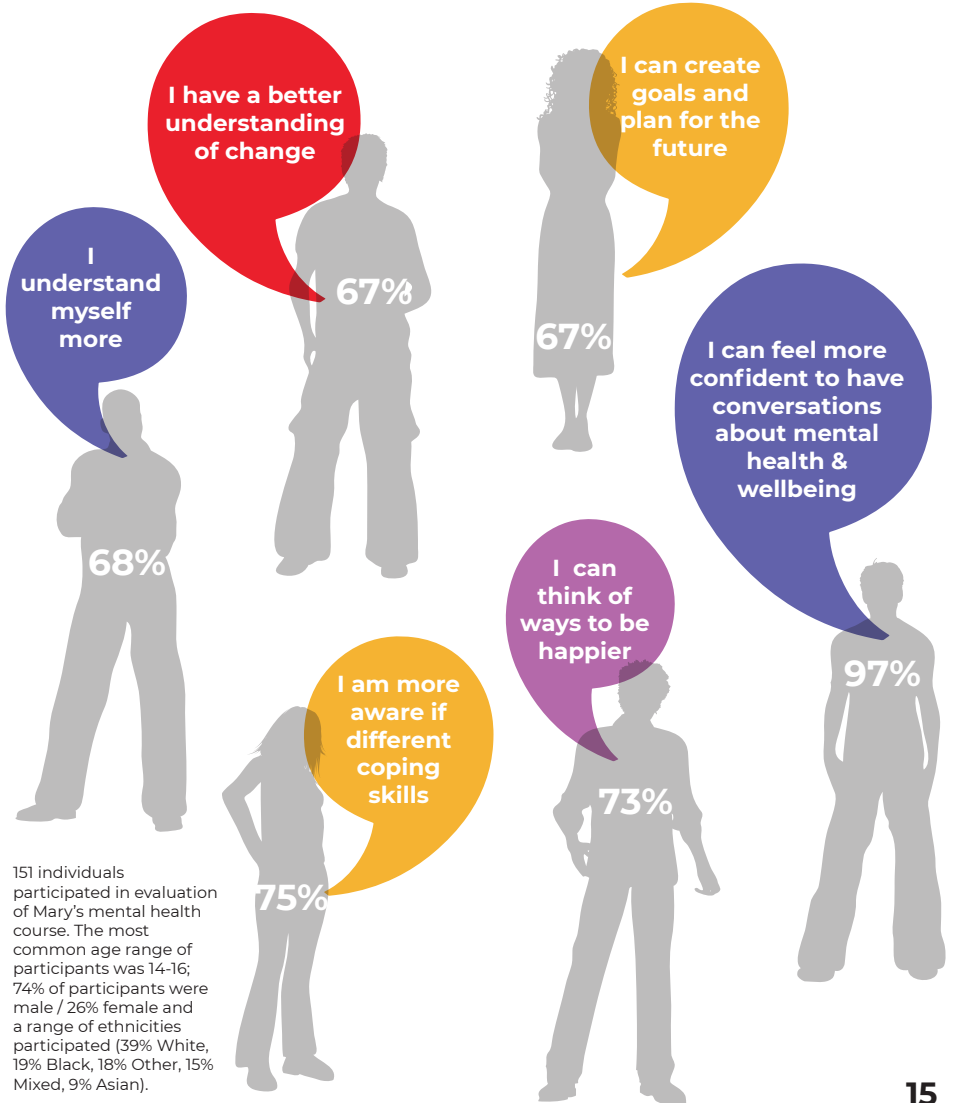
Improved Self Esteem

Improved Mental Health

Reduction of Aggression

Mental health in schools

Young people finishing our six week mental health program in schools reported they 'strongly agreed' with the following outcomes.



151 individuals participated in evaluation of Mary's mental health course. The most common age range of participants was 14-16; 74% of participants were male / 26% female and a range of ethnicities participated (39% White, 19% Black, 18% Other, 15% Mixed, 9% Asian).

Life Skills

This year Mary's helped 29 young people to employment. We join our young people up with youth employment initiatives. We also use direct links with employers.

25 young people have been able to gain qualifications with help from Mary's this year. Young people choose the topic that they are interested in that they believe will further their intended career. Courses are online. Mary's pays for the course and the mentor provides emotional support and encouragement to increase resilience and completions. All young people starting an online course this year successfully completed the course.

Practical support is fundamental for allowing young people to think about the medium term. We provided food packages with family support 108 times this year. For young people coping alone we gave 112 hostel packages. Packs included food items and basic provisions like towels and toiletries.

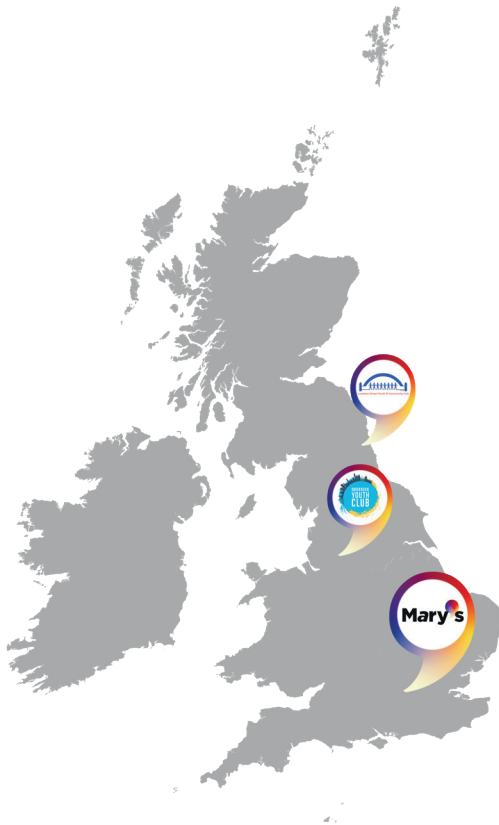
Mary's provides essential items to young people and families who need them.



The Thrive program was trialled at Mary's. **Thrive is footballer and social campaigner Marcus Rashford MBE's life skills program.** It has been developed with the National Youth Agency and sponsored by NatWest.

The course is to improve confidence and life skills. In particular its goals are to increase money management and aspiration. Mary's was delighted to be chosen to further our course development expertise co-creating this program to match young people's needs.

83 individuals attended the Thrive course run at Mary's with a total of 149 hours attended. Young people covered the modules 'Money Talks', 'Own Your Vision' and 'Money Mindset'. Of these 82% were Male and 11% Female (5% not recorded). The age range was 1% age 10-11, 19% age 12-13, 46% age 14-15 and 33% age 16+. Positive changes were recorded in each of the eight outcomes of the program.



"If we give back to young people it will help the future."

- Marcus Rashford MBE.



The year ahead

	Q3	Q4
Safety	Development work on core units	
Emotional Skills	 Celebration event & publication of outcomes report	
Education / Life Skills	Development of behavior	
Mary's New Building	Preparation & permissions for building	
Fundraising		 Mary's Annual

Q1

Q2

Publication
and roll out



Development for
'You Belong'



previous leads and Mary's Inclusion Program

Launch of
Campaign

Mary's
Event



Dog bandanas
& fundraising
walk!]



Sports
promotion!

Mary's Partners



HOUSE
COLLECTIVE



MAYOR OF LONDON



St Mary's
Primrose
Hill



**YOUNG
CAMDEN
FOUNDATION**



HM Prison &
Probation Service

VRU

MAYOR OF LONDON
VIOLENCE REDUCTION UNIT

NHS

The Tavistock and Portman
NHS Foundation Trust



THE HADLEY TRUST

NYA
National Youth Agency

Finances

INCOME & EXPENDITURE REPORT

SMC Youthwork For the year ended 31st March 2022

Income	
Donations and Grants	£389,272
Charitable Income - School Fees	£16,631
Investment Income	£22
Total Income	£405,925
Expenditure	
Project Costs	£19,800
Fundraising Costs	£4620
Staff Costs	£124,849
Overheads	£63,493
Other	£1,900
Total Expenditure	£214,261
Net Income (Expenditure)	£191,664

Capital Project

We commenced fundraising for improvements to our facilities. The ambition is one counselling room, one group work room, an office and disabled WC. This financial year we had contributions to the capital fund of £144,000 and £35,000 was spent on the professional, architectural, legal and local planning cost of preparation for the works.



Mary's Annual Event 2021. Fundraising and thanking our donors and partners.

Donations

You can donate by bank transfer:

ST. MARY'S CENTRE COMMUNITY TRUST

Sort Code: 09-01-50

Account Number: 04555171

You can give easily online at www.justgiving.com

JustGiving™

Charity gets 100% of a donation



SCAN ME TO DONATE



Supporters

Our Supporters are a dear and valued part of Mary's. Thank you to our Supporters this year for their financial and in-person care for our work and team.

LG Harris Trust	Liberal Jewish Synagogue
Jonathan and Sonita Gale	Alan Bennett
Biss Charitable Trust	Georgina & Bernard David
Ian Laming & Stephanie Free	London Borough of Camden
Estate of Jean Aston	London Community Food Enterprises
Andrew Marr	Robert & Anna King
House Collective	Jimmy Carr
Jonathan & Ruth Adkin	Mayor of London
Ex-Pat Foundation	Young Londoners Fund
Estate of Jenny Weston	National Lottery
Fitzdale Trust	St Mary The Virgin Primrose Hill
Nicholas Hytner	Primrose Hill
Friends of Regents Park	Tristan Capital Partners LLP
The Hadley Trust	Young Camden Foundation

And all our other incredibly generous supporters, some of whom have asked to remain anonymous.

Mary's



This year Mary's has been a Foundation Partner in Thrive, Marcus Rashford's skills program for young people.

www.maryscharity.org